

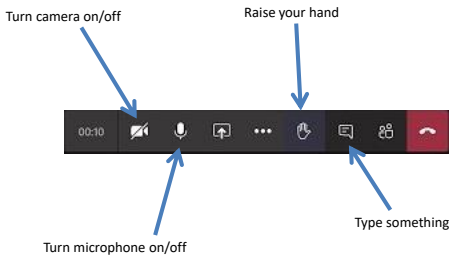


Introduction to Humber Signing

Core Vocabulary



MS Teams Functions



Caring, Learning and Growing

Housekeeping



- If you have a noisy environment or if you need to take a phone call, then please mute your microphone.
- Use the 'hands up button' if you have a question or want to say anything.
- Please remember the rules of confidentiality during this training session.
- Break?



Caring, Learning and Growing

Introductions



- Name?
- Where you work?
- Do you have any signing experience?

Caring, Learning and Growing

Activity

Look at the picture shown next and tell the group one thing about it without speaking or writing...

Caring, Learning and Growing



Caring, Learning and Growing



Caring, Learning and Growing

What is a sign?

A sign is a consistent use of a hand signal to represent a person, place, object, action, feeling, etc.

Caring, Learning and Growing

Why do we use signing?

- For basic communication
- To help understanding
- To develop language skills
- To support spoken language
- To facilitate social interaction
- To help build relationships
- To increase equal opportunities

Caring, Learning and Growing

The Signing Continuum



Caring, Learning and Growing

Signing tips

- Always speak as you sign
- Only sign the key words
- Signing must be used in all daily activities and routines
- People will not sign unless they see it used around them
- Left or right hand?
- Always try to be as accurate as possible
- Consider sight line, positioning, clothing.
- People need signing environments – we can provide them

Caring, Learning and Growing

Expressive features

- Facial expressions, e.g. happy / sad
- Body language, e.g. tense / relaxed
- Appropriate direction, e.g. give and look
- Appropriate placement, e.g. here, there
- Movement, e.g. aeroplane

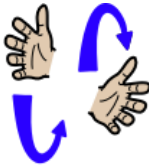
Caring, Learning and Growing

Identifying key words

- Come through here and have a shower.
- Here's Jane's drink of water.
- Why don't you get your coat on so we can go.
- Have you seen where I put my pen?
- I am going home soon, where are you going?
- Go and get on the bus we are going swimming.

Caring, Learning and Growing

Let's practise the signs!



Caring, Learning and Growing

Finger spelling

- Your dominant hand is the one you use for pointing with
- The vowels are all on one hand – keep your hand flat and fingers spread as you point to your fingers



Caring, Learning and Growing

Core vocabulary

- The signs most commonly used by our clients
- 76 signs
- Sign of the week pack
- Let's practise!

Caring, Learning and Growing

Now lets practise some sentences...

- I'd like a ham sandwich and a coffee please
- There will be music at the party
- I'm going on holiday to Greece
- My sister doesn't like horse riding
- Where is the toilet?
- You need to brush your teeth before bed
- I feel angry, I need to calm down

Caring, Learning and Growing

Your turn...

- Where is the bus going?
- My brother is washing the car
- Do you want a biscuit?
- I don't like swimming
- Do you want water or orange?
- I've got a headache, I need some medicine
- My mum's name is Julie

Caring, Learning and Growing

- My Dad's name is Steve
- I'd like a tea with milk but no sugar
- Can you help me stand up?
- How are you? You feel hot.

Caring, Learning and Growing

What next?

- Keep practising!
- Put a sign of the week pack up in your workplace

Caring, Learning and Growing

Thank you
Any questions?



Caring, Learning and Growing
